

I. Introduction

The **ETP-GSM** is used in conjunction with an ETP-400 Series ADA-compliant, hands-free Emergency Phone.

IMPORTANT NOTE: The ETP-GSM Cellular Interface does not comply with Enhanced 911 (E911) requirements mandated by the Federal Communications Commission (FCC). In order to comply with the E911 mandate, the ETP-GSM Cellular Interface software prohibits the dialing of 911.

IMPORTANT NOTE: Programming of the ETP-400 Series Phones cannot be done through a remote call to the ETP-GSM Cellular Interface. For programming, an ETP-400 Series Phone must be connected directly to a standard analog phone line connection.

IMPORTANT NOTE: The built-in auto-dialer of the ETP-400 Series Phone cannot dial a secondary number in round robin fashion when used in conjunction with the ETP-GSM Cellular Interface.

IMPORTANT NOTE: All programming, diagnostics, and identification of the ETP-400 Series Phones are accomplished through the transmitting and receiving of DTMF signals. Cellular transmissions and cellular networks may interfere with and distort these tones. As a result of these irregularities, model ETP-TAL Talk-A-Lert Polling may not function as intended and, therefore, may not be appropriate in that application or environment; ETP-TAL Talk-A-Lert Base Station will not function at all.

In any event, due to these irregularities, programming of the ETP-400 Series Phone should be done on a land line (i.e., not through the ETP-GSM Cellular Interface).

II. Prerequisite Cellular Service Requirements

Prior to installation and setup, the **ETP-GSM** Cellular Interface has the following prerequisite requirements:

- (1) 3G voice service from a local cellular service provider that supports GSM (e.g. AT&T, T-Mobile);
- (2) An activated SIM card provided by the local cellular service provider.

III. Contents

Before beginning installation, make sure you have all the included components. The **ETP-GSM** includes:

Qty.	Part Number	Description
1	68696	GSM Cellular Interface
1	68416GSM	Remote-mounting Omni-directional Antenna
1	19679	Antenna Mount with Cable Assembly
1	42929	Torx T10 L-Key
2	4247	8-32 x 1/2 BH Screw
2	4248	8-32 x 5/16 Hex Nut
2	42767	#10 External Lock Washer

IV. Installing the Antenna

The **ETP-GSM** Cellular Interface includes a remote-mounting omni-directional antenna. The remote-mounting antenna should be attached to the Talk-A-Phone enclosure (e.g. ETP-MT/R-OP-SOLAR tower) via the built-in antenna mounting hole. To install the remote-mounting antenna, please follow the separate antenna mount instructions included with the remote-mounting omni-directional antenna.

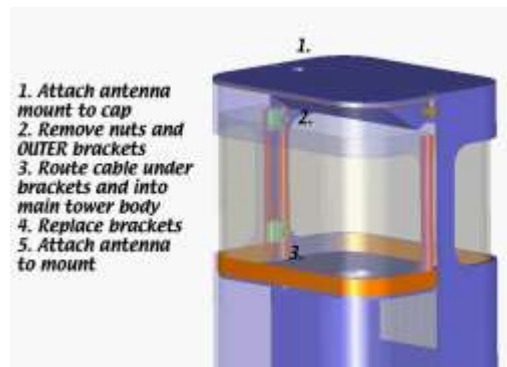


Figure 1. An example of mounting the remote-mounting antenna onto the cap of an ETP-MT/R-OP-PCS tower.

The remote-mounting antenna will be connected to the **ETP-GSM** Cellular Interface.

V. Installing the Cellular Interface

1. The front panel of the **ETP-GSM** Cellular Interface provides the following:
 - (1) Cellular signal strength indicator;
 - (2) LED indicators for **POWER**, **CELLULAR**, and **STATUS**;
 - (3) **PHONE-FXS** port for connecting to an ETP-400 Series Phone.



Figure 2. Front panel of the **ETP-GSM** Cellular Interface.

2. The rear panel of the **ETP-GSM** Cellular Interface provides the following:
 - (1) Input terminal for 12VDC;
 - (2) Connector for remote-mounting omni-directional antenna;
 - (3) A serial port (for Talk-A-Phone Technical Support purposes only).



Figure 3. Rear panel of the **ETP-GSM** Cellular Interface.

3. Using the supplied Torx T10 L-Key, remove the Torx T10 screws from the rear panel (i.e. the panel with the 12VDC, antenna, and FXS connectors).
4. Carefully slide out the electronic board from the **ETP-GSM** Cellular Interface chassis.

5. Locate the SIM card holder (see *Figure 4*).



Figure 4. Location of the SIM card holder.

6. Unlock the SIM card holder and flip open the tray.



Figure 5. The SIM card holder unlocked and flipped open.

7. **IMPORTANT:** Note the orientation of the angled notch on both the SIM card and the SIM card holder.

Insert the SIM card into the SIM card holder according to the location of the angled notch and gold contacts (see *Figure 6*).



Figure 6. The tray of the SIM card holder in the open position. Note the SIM card that has been installed into the tray.

8. Flip the tray back to the closed position. Lock the SIM card holder by sliding the tray in the direction of the arrow located on the tray. *Figure 7* illustrates a SIM card locked into the SIM card holder.



Figure 7. SIM card installed and locked into the SIM card holder.

9. Carefully slide the electronic board back into the **ETP-GSM** Cellular Interface chassis.
10. Using the supplied Torx T10 L-Key, reinstall the Torx T10 screws.
11. Connect the cable assembly from the remote-mounting omni-directional antenna to the **CELLULAR** connector.
12. Connect the ETP-400 Series Phone to the **PHONE-FXS** port.
13. If a **SOLAR KIT** is used, connect the **LOAD** terminals of the solar controller to the appropriate polarity markings on the 12VDC input terminal (i.e. **POWER** terminal) of the **ETP-GSM** Cellular Interface. Otherwise, connect a 12VDC power source appropriately with respect to polarity.

ETP-GSM – Cellular Interface Installation Instructions

- Using the built-in mounting flanges, attach the **ETP-GSM** Cellular Interface onto the internal mounting panel of the Talk-A-Phone enclosure (e.g. ETP-MT/R-OP-SOLAR). The **ETP-GSM** Cellular Interface should be mounted so that the 12VDC input terminal is on the lower right corner (i.e. toward the Earth).

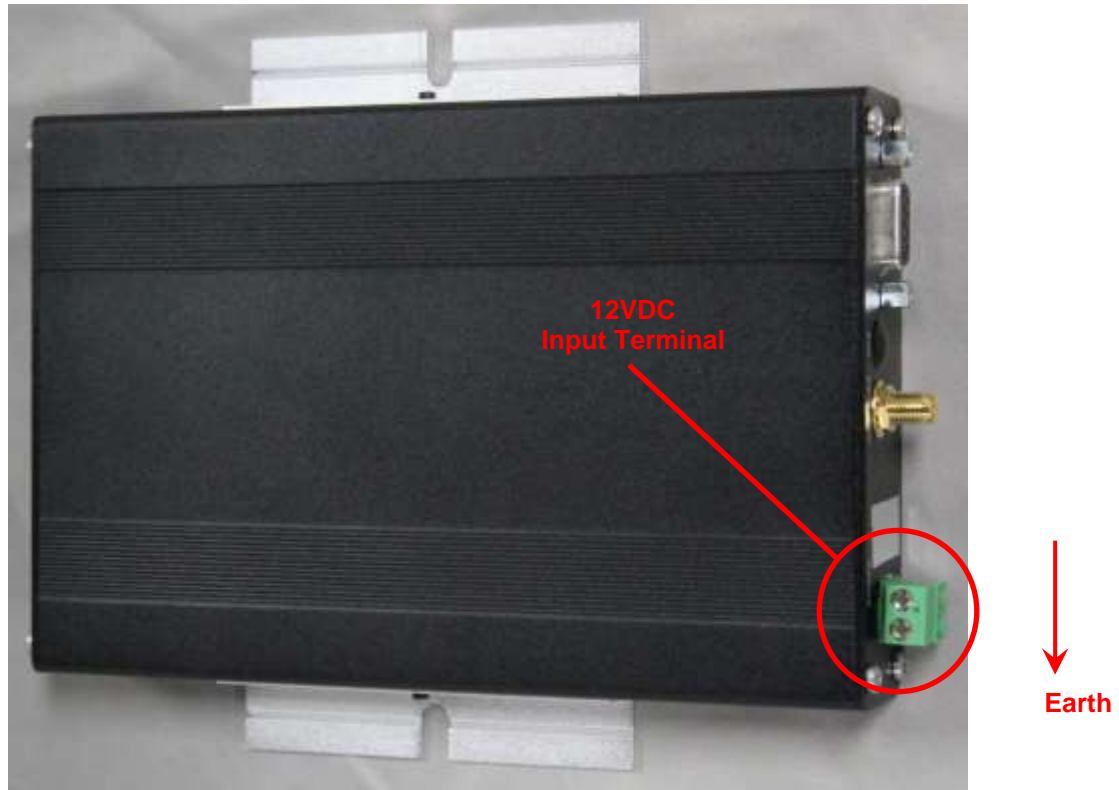


Figure 8. This photo illustrates the appropriate mounting position and orientation for the ETP-GSM Cellular Interface.

VI. Activation of Cellular Service

Select a local cellular service provider that supports GSM (e.g. AT&T, T-Mobile) and 3G voice service. Per the aforementioned installation instructions, install an activated SIM card provided by the local cellular service provider into the **ETP-GSM** Cellular Interface.

VII. Programming the ETP-400 Series Phone

The ETP-400 Series Phone requires specific programming for operation with the **ETP-GSM** Cellular Interface. At minimum, the ETP-400 Series Phone should be programmed with the following codes:

```
* 4 **
* 13 * <Phone_Number> # *
* 14 * 3 *
* 18 * 5 *
* 24 * 0 *
* 27 * 0 *
* 55 *
* 56 *
* 58 * <Speak_to_Record_Voice_Message> (optional)
* 72 *
* 103 *
```

For a full comprehensive list of programming codes, reference the Installation & Operation Manual for Emergency/Information Phones.

NOTE: The hash or # appended after the <Phone_Number> (i.e. for the * 13 * <Phone_Number> # * code) is only required if the Intelli-Voice option (V-Chip) is used on the ETP-400 Series Phone.