

I. Introduction

The **ETP-CDMA-V** is used in conjunction with an ETP-400 Series ADA-compliant, hands-free Emergency Phone.

IMPORTANT NOTE: The ETP-CDMA-V Cellular Interface does not comply with Enhanced 911 (E911) requirements mandated by the Federal Communications Commission (FCC). In order to comply with the E911 mandate, the ETP-CDMA-V Cellular Interface software prohibits the dialing of 911.

IMPORTANT NOTE: Programming of the ETP-400 Series Phones cannot be done through a remote call to the ETP-CDMA-V Cellular Interface. For programming, an ETP-400 Series Phone must be connected directly to a standard analog phone line connection.

IMPORTANT NOTE: The built-in auto-dialer of the ETP-400 Series Phone cannot dial a secondary number in round robin fashion when used in conjunction with the ETP-CDMA-V Cellular Interface.

IMPORTANT NOTE: All programming, diagnostics, and identification of the ETP-400 Series Phones are accomplished through the transmitting and receiving of DTMF signals. Cellular transmissions and cellular networks may interfere with and distort these tones. As a result of these irregularities, model ETP-TAL Talk-A-Lert Polling may not function as intended and, therefore, may not be appropriate in that application or environment; ETP-TAL Talk-A-Lert Base Station will not function at all.

In any event, due to these irregularities, programming of the ETP-400 Series Phone should be done on a land line (i.e., not through the ETP-CDMA-V Cellular Interface).

II. Prerequisite Cellular Service Requirements

Prior to installation and setup, the **ETP-CDMA-V** Cellular Interface has the following prerequisite requirements:

- (1) EVDO (3G) voice service from Verizon Wireless.

III. Contents

Before beginning installation, make sure you have all the included components. The **ETP-CDMA-V** includes:

Qty.	Part Number	Description
1	68829	CDMA Cellular Interface for Verizon Wireless
1	68416GSM	Remote-mounting Omni-directional Antenna
1	19679	Antenna Mount with Cable Assembly
1	42929	Torx T10 L-Key
2	4247	8-32 x 1/2 BH Screw
2	4248	8-32 x 5/16 Hex Nut
2	42767	#10 External Lock Washer

IV. Installing the Antenna

The **ETP-CDMA-V** Cellular Interface includes a remote-mounting omni-directional antenna. The remote-mounting antenna should be attached to the Talk-A-Phone enclosure (e.g. ETP-MT/R-OP-SOLAR tower) via the built-in antenna mounting hole. To install the remote-mounting antenna, please follow the separate antenna mount instructions included with the remote-mounting omni-directional antenna.

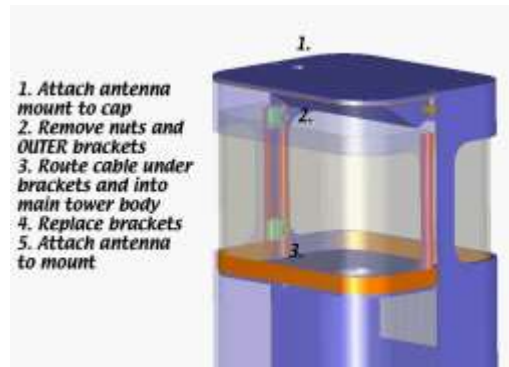


Figure 1. An example of mounting the remote-mounting antenna onto the cap of an ETP-MT/R-OP-PCS tower.

The remote-mounting antenna will be connected to the **ETP-CDMA-V** Cellular Interface.

V. Installing the Cellular Interface

2. The front panel of the **ETP-CDMA-V** Cellular Interface provides the following:
 - (1) Cellular signal strength indicator;
 - (2) LED indicators for **POWER**, **CELLULAR**, and **STATUS**;
 - (3) **PHONE-FXS** port for connecting to an ETP-400 Series Phone.



Figure 2. Front panel of the **ETP-CDMA-V** Cellular Interface.

3. The rear panel of the **ETP-CDMA-V** Cellular Interface provides the following:
 - (1) Input terminal for 12VDC;
 - (2) Connector for remote-mounting omni-directional antenna;
 - (3) A serial port (for Talk-A-Phone Technical Support purposes only).



Figure 3. Rear panel of the **ETP-CDMA-V** Cellular Interface.

3. Connect the cable assembly from the remote-mounting omni-directional antenna to the **CELLULAR** connector.
4. Connect the ETP-400 Series Phone to the **PHONE-FXS** port.
5. If a **SOLAR KIT** is used, connect the **LOAD** terminals of the solar controller to the appropriate polarity markings on the 12VDC input terminal (i.e. **POWER** terminal) of the **ETP-CDMA-V** Cellular Interface. Otherwise, connect a 12VDC power source appropriately with respect to polarity.

ETP-CDMA-V – Cellular Interface Installation Instructions

- Using the built-in mounting flanges, attach the **ETP-CDMA-V** Cellular Interface onto the internal mounting panel of the Talk-A-Phone enclosure (e.g. ETP-MT/R-OP-SOLAR). The **ETP-CDMA-V** Cellular Interface should be mounted so that the 12VDC input terminal is on the lower right corner (i.e. toward the Earth).

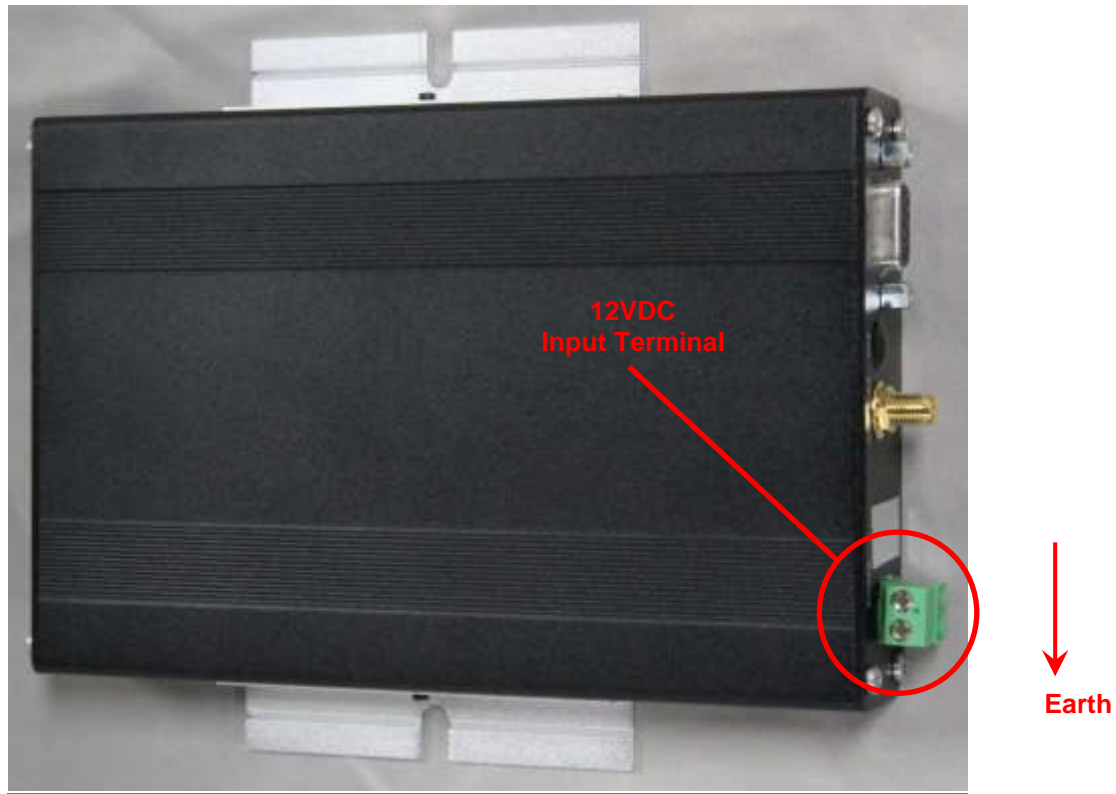


Figure 4. This photo illustrates the appropriate mounting position and orientation for the ETP-CDMA-V Cellular Interface.

VI. Activation and Provisioning of Verizon Wireless Cellular Service

Locate the *MEID*¹ printed on the product packaging or on the **ETP-CDMA-V** Cellular Interface. The *MEID* is a 14-character hexadecimal code. The *MEID* for each **ETP-CDMA-V** Cellular Interface will need to be collected in advance.

Contact your Verizon Wireless representative and inform them of the *MEID(s)* that require activation and provisioning.

Before a new **ETP-CDMA-V** Cellular Interface can be put into service for full operation, provisioning will need to be completed by Verizon Wireless. Provisioning is a required over-the-air procedure that configures the **ETP-CDMA-V** Cellular Interface to operate on the Verizon Wireless network. During this process, Verizon Wireless will assign a telephone number for each *MEID* or **ETP-CDMA-V** Cellular Interface.

¹ Mobile Equipment Identifier

ETP-CDMA-V – Cellular Interface Installation Instructions

The Verizon Wireless representative will instruct you to complete the provisioning process by temporarily connecting a telephone test set or standard analog touch-tone telephone to the **ETP-CDMA-V** Cellular Interface.

Using the telephone test set or standard analog touch-tone telephone, bring the telephone off-hook and dial *228. Listen for the Verizon Wireless voice prompt indicating a successful or failed provisioning process. If the voice prompt indicates failure, try the *228 provisioning process again or request assistance from the Verizon Wireless representative. If successful, bring the telephone on-hook, and then bring the telephone off-hook to verify that a dial tone is present.

Once dial tone is present, field installation of the **ETP-CDMA-V** Cellular Interface can begin and the ETP-400 Series Phone can be connected.

VII. Programming the ETP-400 Series Phone

The ETP-400 Series Phone requires specific programming for operation with the **ETP-CDMA-V** Cellular Interface. At minimum, the ETP-400 Series Phone should be programmed with the following codes:

```
* 4 **
* 13 * <Phone_Number> # *
* 14 * 3 *
* 18 * 5 *
* 24 * 0 *
* 27 * 0 *
* 55 *
* 56 *
* 58 * <Speak_to_Record_Voice_Message> (Optional)
* 72 *
* 103 *
```

For a full comprehensive list of programming codes, reference the Installation & Operation Manual for Emergency/Information Phones.

NOTE: The hash or # appended after the <Phone_Number> (i.e. for the * 13 * <Phone_Number> # * code) is only required if the Intelli-Voice option (V-Chip) is used on the ETP-400 Series Phone.