

ETP-MT/R Anchor Bolt Installation Instructions

I. Introduction

Note: This manual is for anchor bolt installation only. For instructions on installing the tower onto the anchor bolts, see the ETP-MT/R Tower Installation Instructions.

II. Contents

Before beginning installation, make sure you have all the included components. Each Tower consists of three packages. Package #1 is the anchor bolt kit labeled MT/R BOLT KIT. Package #2 is labeled TOWER PTS, TOWER PTS 24V or OP4 TOWER PTS. Package #3 contains the tower itself.

Anchor Bolt Install Kit

QTY	Part Number	Description
4	42838	J-Bolts
1	26312	Cardboard Template

Tower Install Kit (keep for use when installing the tower)

QTY	Part Number	Description
8	42839	3/4"-10 Hex Nut
8	42840	3/4" Washer
3	42841	10-24 x 3/4" panhead tamperproof screw
2	42843	6-32 hex nut
1	67478	Polycarbonate light cover
1	68590	LED light board (12-24V AC/DC - 120VAC)
1	ETP-EL-L or ETP-EL12/24	Long Cord 120VAC Strobe Light or 12/24V AC/DC Strobe Light

III. Installation

1. Electrical and telephone line conduits should be run through the foundation and into the center 4" diameter hole of the tower.

NOTE: To insure proper grounding of all electrical components, the tower mount should be effectively earth grounded from the grounding stud (located across from the lower access panel) with 6 AWG or better insulated, stranded copper wire to the metallic power service raceway (conduit) or an 8 foot or longer corrosion-resistant ground spike. It is the installer's obligation to ensure compliance with all national, regional, and local regulations.

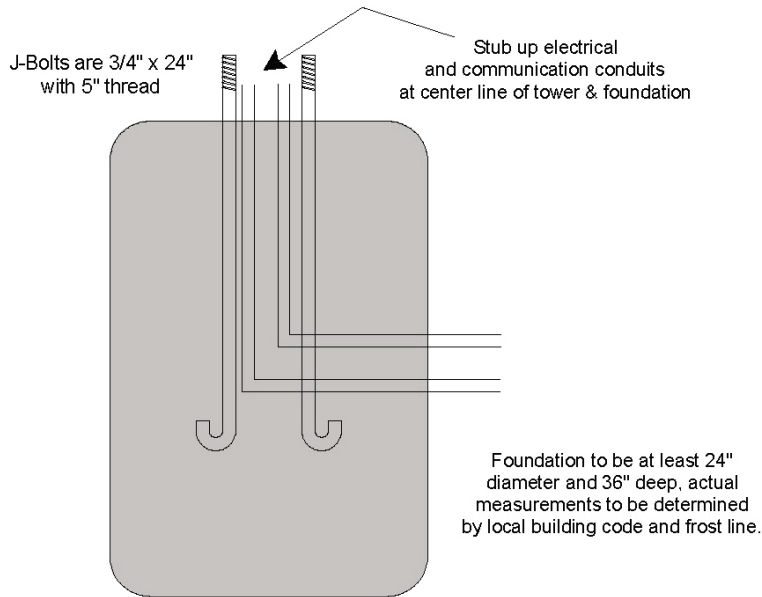
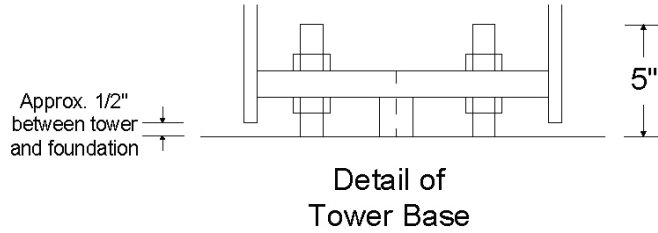
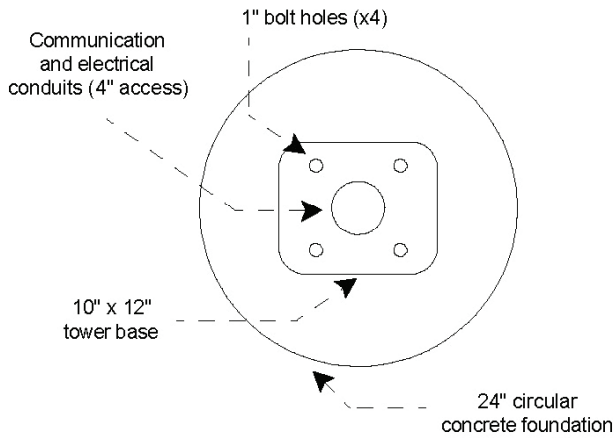
2. Pour the foundation at least 2 feet in diameter and 3 feet deep according to your local code and frost line (see foundation drawing on following page).
3. Install the four (4) 3/4" - 10 x 24 long anchor bolts below grade **with five inches (5") projecting above grade** (see foundation drawing on following page). Use the template provided to properly position the bolts within the concrete foundation.

NOTE: Make sure all connections meet National, Regional, and Local Electric Codes.

Copyright 2009 Talk-A-Phone Co. All rights reserved.

ETP-MT/R Anchor Bolt Installation Instructions

IV. ETP-MT/R Foundation Drawing



Installation must comply with all National, State and Local Construction and Electrical Codes.

Copyright 2009 Talk-A-Phone Co. All rights reserved.

Talk-A-Phone Co. • 7530 North Natchez Avenue • Niles, Illinois 60714-3804
Phone 773.539.1100 • Fax 773.539.1241 • info@talkaphone.com • www.talkaphone.com
All prices and specifications are subject to change without notice.
Talk-A-Phone, Talk-A-Lert, Scream Alert and WEBS are registered trademarks of Talk-A-Phone Co.

Page 2 of 2