

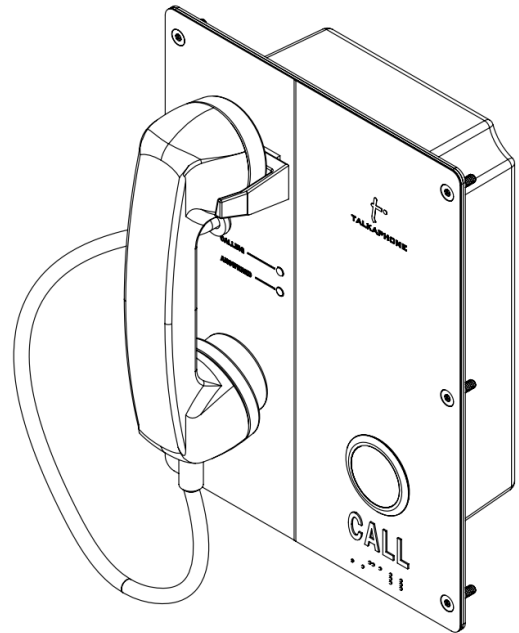
ETP-520CP Analog Call Station with Single Button and Handset

Description

The **ETP-520CP** is an outdoor-rated analog call station with a handset and a CALL button. This call station is for use in noisy areas or other locations where private conversation is desired.

Features

- G-style black-colored handset incorporates a noise-canceling microphone and a **20-inch armored cord**
- Vandal resistant 316 marine grade stainless steel faceplate and metal CALL button in red
- Raised letter and braille signage
- Two (2) LED indicators for hearing impaired (CALLING and ANSWERED)
- Operates on a standard analog phone line or extension for communications and function—no power supply needed
- When the button is pushed, the built-in auto-dialer can dial up to five (5) numbers. If first number does not answer or is busy, dials second number. If second number does not answer or is busy, dials third number—and so on.
- Ability to identify the physical location of the call station through a pre-recorded voice message that plays at the beginning of a call or through Talk-A-Lert (sold separately)
- Available Auxiliary Input can be triggered by a momentary dry contact closure (e.g., vehicle detector) to auto-dial a list of phone numbers—order Model **ETP-AUXIN-KIT-2** to enable feature
- Two (2) Auxiliary Outputs can each provide a dry contact closure to devices such as a blue light beacon, access control panel, or security camera
- Does not support inbound calls (no ringer)



Specifications

Handset/cord:	G-style black-colored handset resting on metal cradle (no hook switch provided, call activated by pressing the CALL button) with 20-inch armored cord and noise-canceling microphone
Construction:	0.086 in. (2.13mm) #4 brushed 316 stainless steel faceplate
Dimensions:	Front Panel: 8.5 x 11.5 in. (216 x 292 mm) Back Box: 6.38 x 9.79 x 2.83 in. (162 x 249 x 72 mm)
Weight:	8.8 lbs. (4.0 kg)
Storage Temperature:	-40° F to +149° F (-40° C to +65° C)
Operating Temperature:	-40° F to +131° F (-40° C to +55° C)
Relative Humidity:	Up to 95% non-condensing
Protection:	Circuit board parylene coated
Mounting:	Flush mount with available MS-600 (sold separately) Surface mount options available
Communication:	Handset for private communication
Digit Capacity:	Up to 50-digits, including pauses, for each of five (5) phone numbers

IMPORTANT NOTE: Model **ETP-520CP** is designed to auto-dial to an attendant station or centralized monitoring service. This model **DOES NOT** include a built-in telephone ringer function and any inbound calls will be auto-answered almost immediately by the **ETP-520CP** Call Station.

ETP-520CP Analog Call Station with Single Button and Handset

Specifications (Continued)

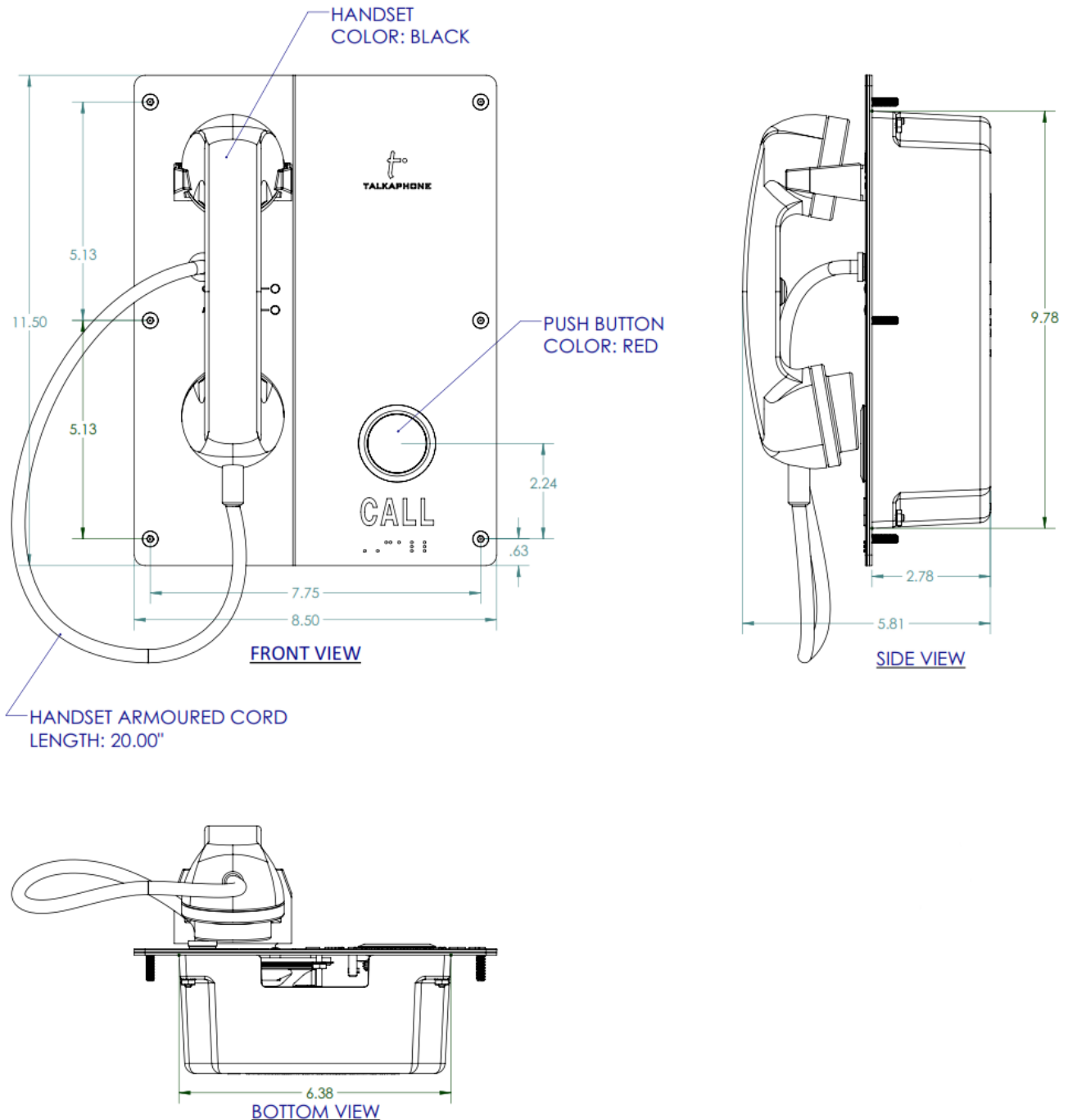
Dialing Speed:	51 ms or 102 ms on/off
Power Source:	Phone line powered (requires 20mA at 24 V off-hook)
Connection:	Parallel tip and ring connected to RJ11 connector for quick installation
Circuit Protection:	Sidactor lighting suppressed and full wave polarity guarded
Auxiliary Input:	Optionally available with one (1) relay input (N.O.) rated for 2.2-30 VAC/VDC. Accepts a momentary contact closure. Order Model ETP-AUXIN-KIT-2 to enable feature.
Auxiliary Outputs:	Two (2) relay outputs (N.O.) rated for a maximum of 1.0A at 30VDC or 0.5A at 110VAC
Line Level Output:	One (1) 600 Ohm line level audio output
Programming:	Non-volatile EEPROM programming can be done from a telephone. No battery backup is needed to save configuration.
"On Time":	Programmable from 1 to 99 minutes in 1-minute increments
Ingress Protection:	Type 3R NEMA enclosure rating
Warranty:	2-year limited warranty

Options & Accessories

6-Line Consolidator:	Model EC-6 allows up to six (6) analog Call Stations to share and utilize one (1) phone line. Also, it can be used to create an internal communication system without need for any telephone (PSTN) lines.
Monitoring/Diagnostic Software Package:	Talk-A-Lert®, model ETP-TAL-1 , automatically polls each analog Call Station, reports incoming calls, and keeps permanent records of all events
Flush Mount:	Order Model MS-600 to mount flush into a wall
Surface Mount:	For available surface mount options, visit: https://www.talkaphone.com/products/access-control-communication/surface-mounts/

ETP-520CP Analog Call Station with Single Button and Handset

Dimensional Diagram



All dimensions are in inches and are provided for reference only.